



GOBIERNO  
DE ESPAÑA

MINISTERIO  
DE HACIENDA  
Y ADMINISTRACIONES PÚBLICAS



# General Government deficit 2015

7th April 2016



GOBIERNO  
DE ESPAÑA

MINISTERIO  
DE HACIENDA  
Y ADMINISTRACIONES PÚBLICAS

## Outturn and budgetary stability targets

Net lending (+)/net borrowing (-) (% GDP)

	Deficit 2011*	Deficit 2012	Deficit 2013	Deficit 2014	Deficit 2015	Target 2015	Deviation (vs 2015)	Target 2016
Central Government	-5.76	-7.92	-4.77	-3.67	-2.61	-	-	-
Central Gov. (excluding financial assistance)	-5.43	-4.25	-4.48	-3.57	-2.53	-2.9	0.22	-2.2
Financial assistance	-0.33	-3.67	-0.29	-0.10	-0.08	-	-	-
Regional Governments	-3.35	-1.86	-1.57	-1.75	-1.66	-0.7	-0.96	-0.3
Local Governments	-0.40	0.32	0.55	0.57	0.44	0.0	0.44	0.0
Social Security Funds	-0.10	-0.98	-1.12	-1.04	-1.26	-0.6	-0.66	-0.3
Social Security System and Mutual insurance	-	-	-	-1.44	-1.71	-	-	-
SEPE			-	0.46	0.47	-	-	-
FOGASA	-	-	-	-0.07	-0.01	-	-	-
General Gov. (including financial assistance)	-9.61	-10.44	-6.91	-5.89	-5.08	-	-	-
General Gov. (excluding financial assistance)	-9.29	-6.77	-6.62	-5.79	-5.00	-4.2	-0.96	-2.8
No recurring expenditures ("one off")	-	-	-	0.06	0.18	-	-	-
General Gov. (excluding financial assistance and one off)	-	-	-	-5.73	-4.8	-4.2	-0.6	-2.8

Concept (Million€)	2014	2015
Capital expenditures(public-private contracts ; "sale and lease back"; guarantees carrying out ...)	566	799
Current expenditures (hepatitis C...)	-	1.094
Total	566	1.893

\*2011 before allocating the 2009 negative settlements of the financing system .

Source: IGAE. MINHAP ("One off").

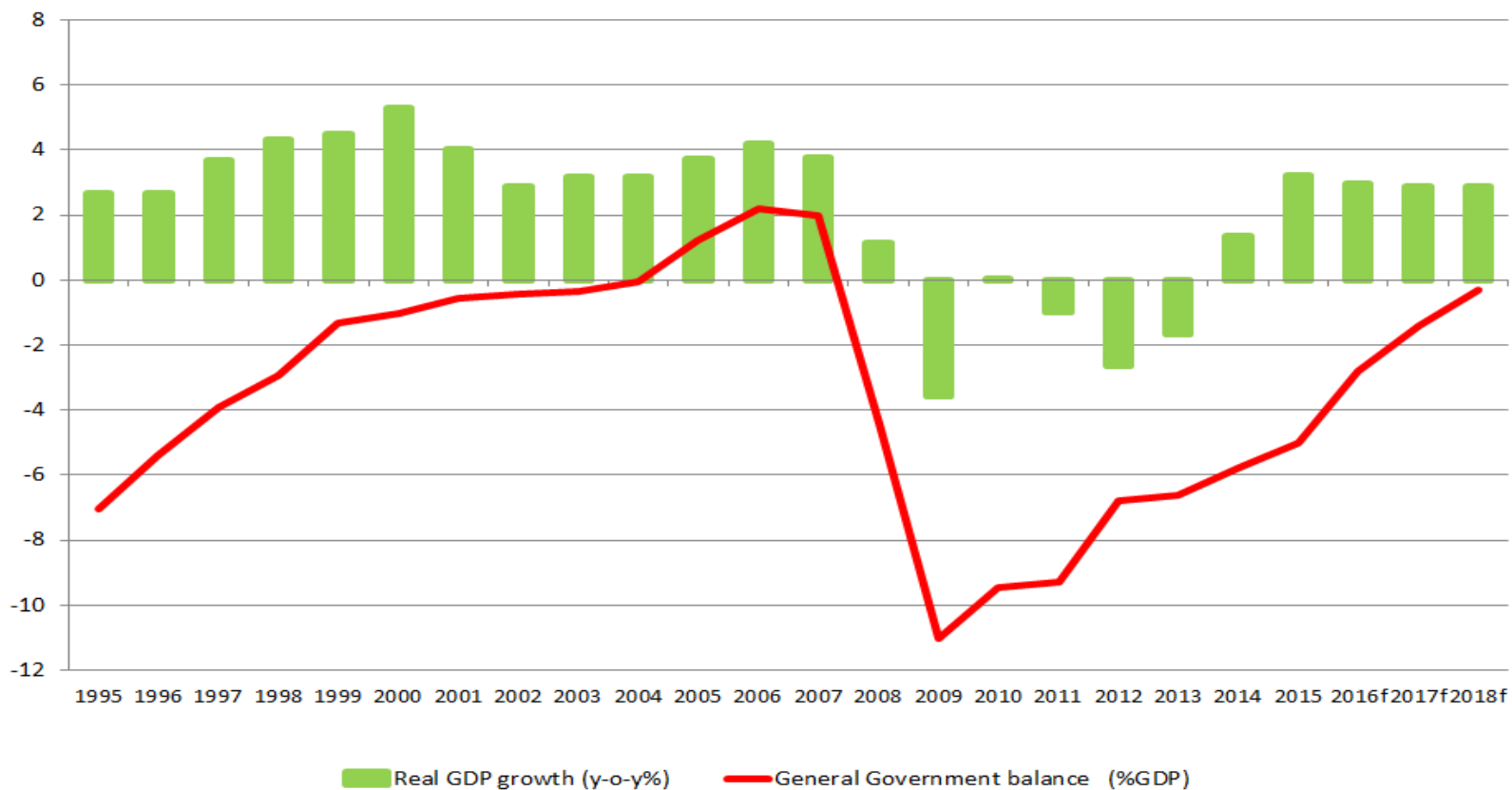


GOBIERNO  
DE ESPAÑA

MINISTERIO  
DE HACIENDA  
Y ADMINISTRACIONES PÚBLICAS

## Fiscal consolidation and lending capacity

Net lending (+) or net borrowing (-) (%GDP)



Source: IGAE, MINHAP. Excluding one-off measures from the restructuring of the financial sector.

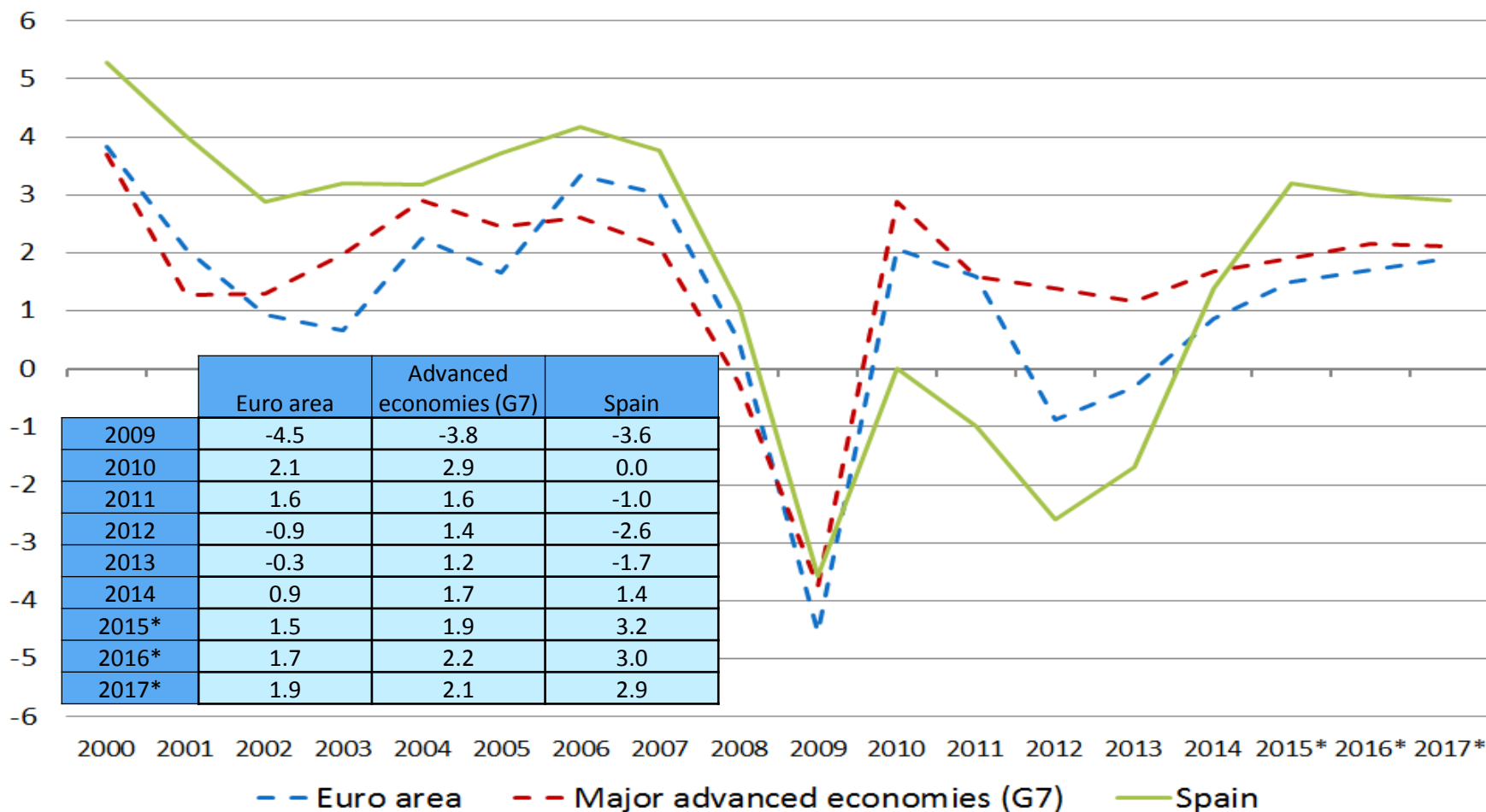


GOBIERNO  
DE ESPAÑA

MINISTERIO  
DE HACIENDA  
Y ADMINISTRACIONES PÚBLICAS

# Economic growth differential

## Real GDP growth (y-o-y %)



Source: INE, PGE 2016, IMF (WEO October 2015), and European Commission (Winter forecast 2016).



GOBIERNO  
DE ESPAÑA

MINISTERIO  
DE HACIENDA  
Y ADMINISTRACIONES PÚBLICAS

## Renueves

### General Government Consolidated Renueves (M€)

	2014	2015	%
Total Taxes	224,702	236,003	5.03
Taxes on production and imports	119,309	126,514	6.04
Taxes on products	99,226	106,479	7.31
Other taxes on production	20,083	20,035	-0.24
Current taxes on income and wealth	105,393	109,489	3.89
Current taxes on income and household wealth	84,502	84,039	-0.55
Current taxes on income and corporate wealth	20,891	25,450	21.82
Social contributions	130,063	132,333	1.75
Sales and other current revenue	41,018	38,315	-6.59
General Government consolidated renewes	401,722	413,456	2.92
<i>Pro memoria</i>			
VAT	64,688	69,633	7.64
PIT	79,383	78,771	-0.77
CIT	20,682	25,213	21.91

Source: IGAE

### Impact of tax reform (M€)

	Cumulative 2015-2016
PIT	-5,439
IS	-2,428
Total	-7,867

Source: MINHAP. Draft  
Budgetary Plan

### Impact of tax reform on growth rates (p.p.)

	2015
Real GDP(%)	0.36
Employment(%)	0.6

Source : MINHAP (REMS).



## Evolution of Tax revenues

### Total Tax revenues (Bn€)

	2007	2011	2012	2013	2014	2015	% Δ 15/14
Personal Income Tax	72.614	69.803	70.619	69.951	72.662	72.346	-0.4%
Corporate Income Tax	44.823	16.611	21.435	19.945	18.713	20.649	10.3%
<i>CIT Instalment payments</i>							
<i>Large corporations and groups</i>	<i>18.070</i>	<i>7.626</i>	<i>11.636</i>	<i>14.692</i>	<i>15.905</i>	<i>16.436</i>	<i>3.3%</i>
<i>SMEs</i>	<i>4.810</i>	<i>1.872</i>	<i>1.758</i>	<i>1.485</i>	<i>1.595</i>	<i>1.835</i>	<i>15.1%</i>
<i>Other</i>	<i>187</i>	<i>136</i>	<i>215</i>	<i>119</i>	<i>-74</i>	<i>177</i>	
<i>Total</i>	<i>23.068</i>	<i>9.634</i>	<i>13.609</i>	<i>16.296</i>	<i>17.425</i>	<i>18.449</i>	<i>5.9%</i>
Other	2.542	2.158	3.027	3.154	3.239	3.759	16.1%
Chapter I.- Direct Taxes	119.979	88.572	95.081	93.050	94.614	96.753	2.3%
Vat	55.851	49.302	50.464	51.931	56.174	60.305	7.4%
Excise Taxes	19.786	18.983	18.210	19.073	19.104	19.147	0.2%
Other	3.224	2.965	2.920	2.721	2.956	3.275	10.8%
Chapter II.- Indirect Taxes	78.861	71.250	71.594	73.725	78.233	82.727	5.7%
Chapter III.- Other Tax revenues	1.836	1.938	1.892	2.073	2.140	2.529	18.2%
Total Tax Revenues	200.676	161.760	168.567	168.847	174.987	182.009	4.0%



## Expenditure by function and real per capita expenditure growth

### Expenditure by function (M€)

M€	01 General public services	02 Defense	03 Public order and safety	04 Economic affairs	05 Environmental protection	06 Housing and community amenities	07 Health	08 Recreation, culture and religion	09 Education	10 Social protection	TOTAL EXPENDITURE
2007	53.122	10.803	20.141	55.955	10.764	9.814	61.238	16.933	43.336	138.574	420.680
2008	56.975	11.228	21.878	60.353	10.884	11.807	67.292	18.140	47.044	153.693	459.294
2009	60.696	10.930	22.187	61.586	11.518	13.976	72.939	17.648	49.692	172.693	493.865
2010	59.970	11.267	23.385	62.550	11.358	7.573	71.080	17.861	48.492	179.178	492.714
2011	66.326	11.138	23.229	53.856	10.174	6.063	69.240	16.214	47.137	180.104	483.481
2012	68.921	9.679	21.194	43.833	9.302	4.824	64.685	12.653	43.307	182.605	461.003
2013	73.339	9.862	21.048	41.656	8.621	4.681	63.152	11.809	42.079	184.293	460.540
2014	72.002	9.023	21.064	44.817	8.701	5.171	63.339	11.992	42.298	183.443	461.850
2015	72.379	10.535	21.458	42.624	8.798	4.862	64.130	12.169	43.249	185.736	465.946
2016	71.345	10.759	21.598	42.955	8.864	4.902	64.487	12.256	43.506	187.379	468.056

(\*) Excluding financial assistance

(\*\*) Breakdown of the Social benefits other than social transfers in kind (D.62)

Source: INE, MINECO, MINHAP, Draft Budgetary Plan 2016 (sept. 2015)



## Regional Governments outturn balances

Net lending (+)/net borrowing (-) (% regional GDP)

	2010**	2011**	2012	2013 (D)	2014 (P)	2015 (A)	Target 2015
Andalucía	-3.15	-3.37	-2.10	-1.57	-1.35	-1.13	-0,7
Aragón	-2.90	-2.65	-1.67	-2.21	-1.80	-2.13	-0,7
Asturias	-2.69	-3.64	-1.02	-1.04	-1.29	-1.53	-0,7
Baleares	-4.39	-4.36	-2.00	-1.22	-1.75	-1.52	-0,7
Canarias	-2.40	-1.54	-1.13	-1.06	-0.93	-0.54	-0,7
Cantabria	-3.90	-3.75	-1.91	-1.31	-1.67	-1.38	-0,7
Castilla-La Mancha	-6.29	-7.64	-1.31	-2.05	-1.83	-1.67	-0,7
Castilla y León	-2.58	-2.73	-1.49	-1.21	-1.14	-1.33	-0,7
Cataluña	-4.48	-4.11	-2.26	-2.13	-2.74	-2.70	-0,7
Extremadura	-2.45	-4.60	-1.05	-0.98	-2.51	-2.64	-0,7
Galicia	-2.31	-2.22	-1.35	-1.14	-1.00	-0.57	-0,7
Comunidad de Madrid	-1.02	-1.82	-1.01	-0.94	-1.37	-1.36	-0,7
Región de Murcia*	-4.88	-4.70	-3.26	-3.19	-2.87	-2.52	-0,7
Comunidad Foral de Navarra	-3.79	-3.11	-1.77	-1.46	-0.85	-1.28	-0,7
La Rioja	-3.83	-1.47	-1.16	-1.07	-1.26	-1.13	-0,7
Comunidad Valenciana	-4.59	-4.95	-3.84	-2.17	-2.49	-2.51	-0,7
País Vasco	-2.44	-2.71	-1.46	-1.24	-1.01	-0.69	-0,7
Total Autonomous Communities	-3.17	-3.35	-1.86	-1.57	-1.75	-1.66	-0,7

\* National Accounts data before considering the effect of the earthquake in Lorca , Murcia , for evaluating target compliance

\*\* Excluding 2008-2009 Settlements of the regional financing system for 2010-2011

Source: IGAE. Ministry of Finance and Public Administration





GOBIERNO  
DE ESPAÑA

MINISTERIO  
DE HACIENDA  
Y ADMINISTRACIONES PÚBLICAS

## Local Governments' Budget Balance 2015

<i>Net lending (+) / Net borrowing (-) EDP % of GDP</i>	2011	2012	2013	2014 (P)	2015 (A)
Local Governments	-0.40	0.31	0.52	0.57	0.44

Source: IGAE

M€

	Non-financial budget balance*				
	2011	2012	2013	2014	2015
Barcelona	69.9	120.1	283.8	172.9	152.3
Madrid	195.2	859.8	1,168.2	1,331.2	1,568.7
Málaga	-1.5	40.0	84.7	104.0	70.2
Sevilla	-32.6	66.6	86.7	29.4	93.0
Valencia	-25.2	7.5	119.3	117.6	130.1
Zaragoza	-2.7	-45.8	81.8	63.5	39.9
Total	203.1	1,048.3	1,824.5	1,818.6	2,054.2

\* General administration of local governments and its autonomous bodies . From 2011-2014: budget settlements. 2015 budget execution advance 4Q data.

Source: Ministry of Finance and Public Administrations



## Drivers of public debt growth

### Drivers of public debt growth ( % of GDP)

	2012	2013	2014	2015
General Government debt	85.4	93.7	99.3	99.2
<b>Change in public debt</b>	<b>15.9</b>	<b>8.3</b>	<b>5.6</b>	<b>-0.1</b>
Factors of debt growth :				
Primary deficit	3.8	3.3	2.4	1.9
Interest expenditure	3.0	3.4	3.4	3.1
Financial sector recapitalisation (deficit)	3.7	0.3	0.1	0.1
Financial Funds to territorial gov.	4.3	3.0	3.0	3.4
FADE	0.5	0.7	-0.1	-0.2
EFSF (lending to Greece, Irl. ,Port)	1.5	0.5	0.1	-0.1
Others	-2.7	-3.9	-2.4	-4.6
Contribution of change in nominal GDP	1.8	1.0	-0.9	-3.7

Source: Banco de España and MINHAP